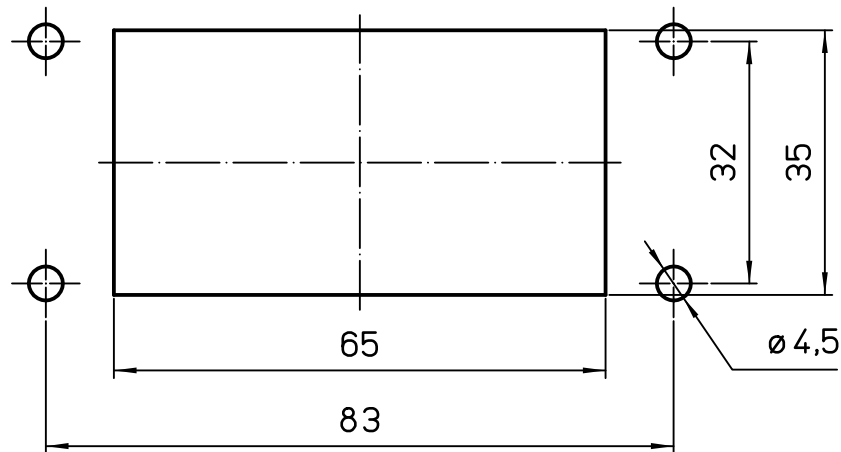


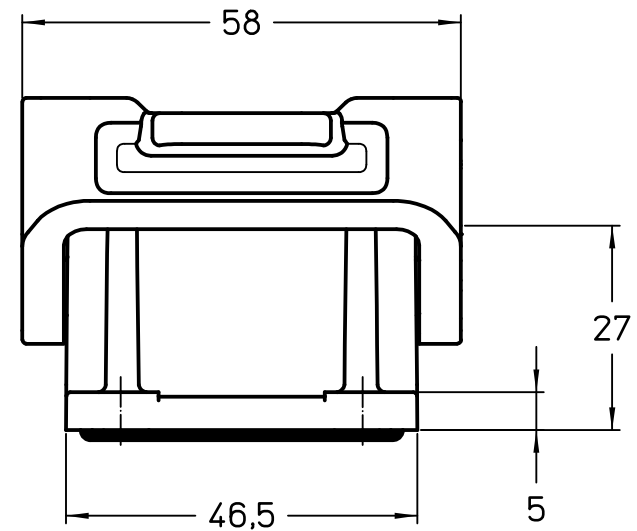
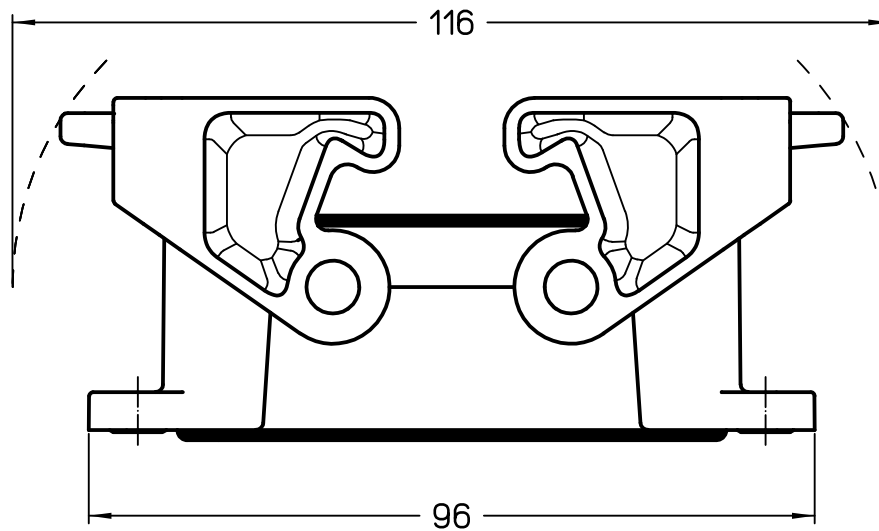
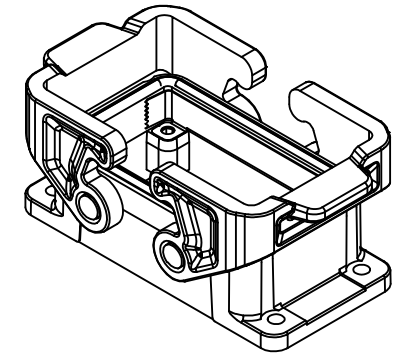
1

2

3



Panel cut-out



	Dimensions in mm
Original Size A4	
Date 06/11/23	
Sign. G. Renna	

Simplified representation with dimensions without tolerance

TCHI 10 B  
Insulating bulkhead mounting housing size "57.27"  
with integrated PE jumpers - T-Type

Scale  
1:1



1

2

3